

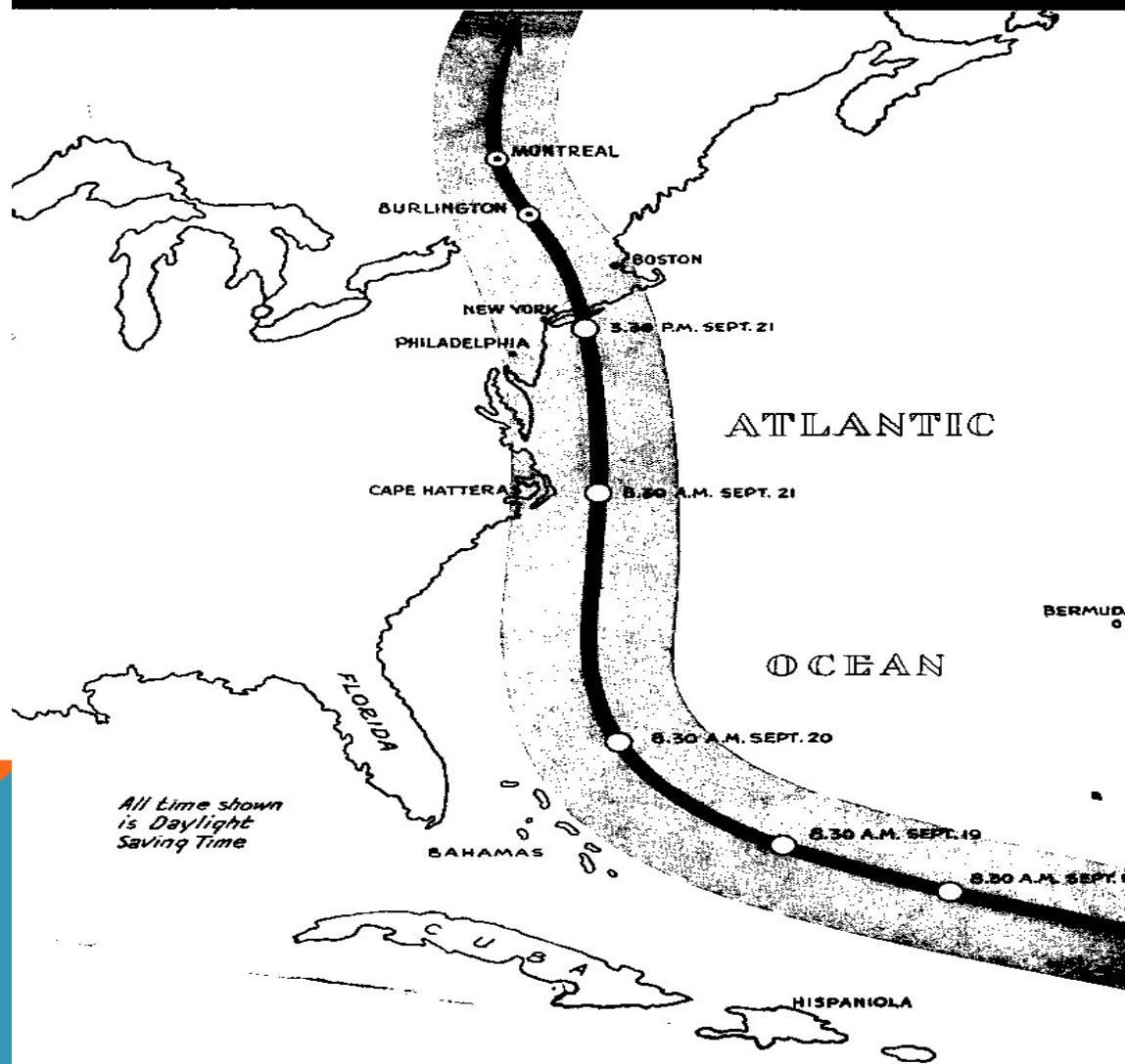
**CT DEMHS  
STATEWIDE EXERCISE  
&  
CT ARES  
SIMULATED EMERGENCY  
TEST  
JULY 2012**

## CT DEMHS STATEWIDE EXERCISE & ARES S.E.T. 2012



# CT DEMHS STATEWIDE EXERCISE & ARES S.E.T. 2012

## HURRICANE



# **CT DEMHS STATEWIDE EXERCISE & ARES S.E.T. 2012**

# **CAT 3**

## **Storm Winds Recorded**

**Sustained: 121 mph**

**Peak Gust: 186 mph**

**Record Low Pressure**

**28.00" (Middletown, CT)**



# **CT DEMHS STATEWIDE EXERCISE & ARES S.E.T. 2012**

## **TIDES**

**18 to 25 foot**

**Severe River Flooding**

**Connecticut River**

**+ 19.4 feet above flood stage  
(Hartford)**

The bottom of the slide features a decorative graphic consisting of two overlapping triangles. The triangle on the left is orange, and the triangle on the right is a lighter blue. They meet at a diagonal line that runs from the bottom left towards the center of the slide.

# **CT DEMHS STATEWIDE EXERCISE & ARES S.E.T. 2012**

## **1938 Hurricane Summary**

**Widespread inland flooding, high winds inland, with severe coastal flooding.**

### **PUBLIC IMPACT**

**Deaths: 564 Injured: >1,700**

### **BOATING IMPACT**

**Destroyed: 2,600 Damaged: 3,300**

### **HOMES/BUILDINGS**

**Destroyed: 8,900 Damaged: > 15,000**

**Catastrophic fires touched off by power lines in Connecticut!**



# CT DEMHS STATEWIDE EXERCISE & ARES S.E.T. 2012



STONINGTON, CONN. With nearly 500 screaming, frightened men, women and children aboard, this passenger train of the New Haven Railroad was derailed. Before they could be brought to safety two passengers were drowned. This picture was taken from the mast of a fishing schooner which was thrown against the rear car of the train and is the first ground shot taken of the wreck. —Hartford Courant



SOUTH GLASTONBURY, CONN. These two young men took a novel but dangerous method of crossing a stream after the bridge was washed out. —Hartford Courant



WOONSOCKET, R. I. Window shoppers stayed home on the evening of Sept. 21, but the strong wind ruined Main Street and left desolation in its wake. —Woonsocket Call



WORCESTER, MASS. Wreckage of the grandstand at the Worcester Fairgrounds. —Worcester Telegram

SOUTHBRIDGE, MASS. Flood waters rushed across the highway at this place submerging automobiles and tearing away the roadbed. —N. E. Tel. & Tel.

# CT DEMHS STATEWIDE EXERCISE & ARES S.E.T. 2012





# CT DEMHS STATEWIDE EXERCISE & ARES S.E.T. 2012



MISQUAMICUT, R. I. The Pleasant View House offered all but a "pleasant view" to relief workers who searched the debris for fifty persons known to be lost. —All pictures on this page by the Hartford Courant



POINT O WOODS, CONN. This row of cottages, all of which were built within the year, were almost completely destroyed. Note the ones pushed back from their concrete steps.



HIGGANUM, CONN. This building was undermined by flood waters before the hurricane and then blown away by the great force of the wind.



WETHERSFIELD, CONN. The wind did great damage to the famous Old Wethersfield Elm said to be the largest tree of its kind in America.



MIDDLETOWN, CONN. Twenty-three of a herd of twenty-seven cows were killed when the terrific wind collapsed this dairy barn.



LYME, CONN. The remains of the summer home of Charles Bowker of North Hampton, Mass., at White Sands as the storm left it.

**CT DEMHS STATEWIDE EXERCISE & ARES S.E.T. 2012**

**ASSUMPTION:**

**NWS Provides a**

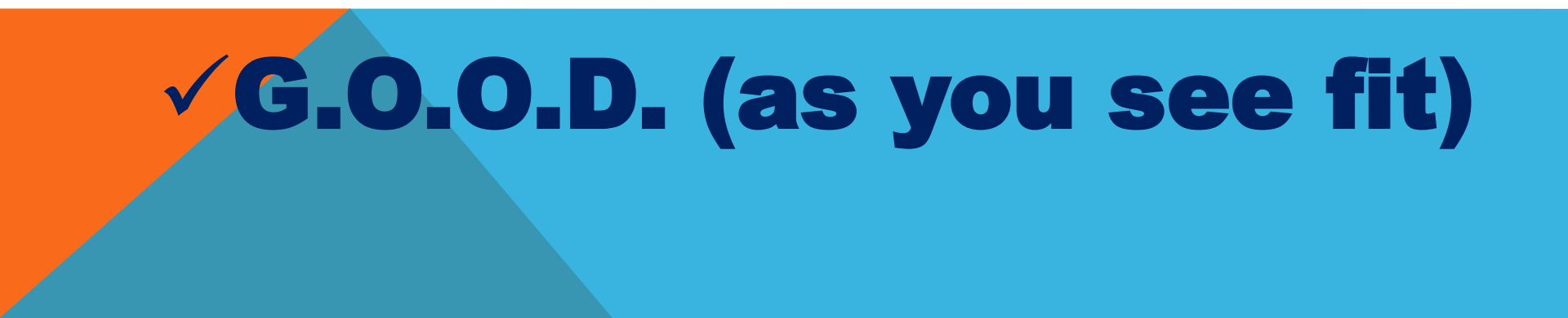
**3 Day Advance Warning.**

**(unlike 1938)**

The bottom of the slide features a decorative graphic consisting of several overlapping triangles in shades of orange, teal, and light blue.

# **CT DEMHS STATEWIDE EXERCISE & ARES S.E.T. 2012**

## **3 Day Warning = TIME to ...**

- ✓ **Square away your home**
  - ✓ **Batten down the hatches**
  - ✓ **Charge your batteries**
  - ✓ **Pre-Flight your Go Box, Go Kit, and Go Bag.**
  - ✓ **Stock up on Fuel (fill car & 5 gal. cans)**
  - ✓ **Load your vehicle.**
- 
- ✓ **G.O.O.D. (as you see fit)**

## **Anticipated Impact**

- **Trees - Down:**
- **Power Lines - Down**
- **Telephone Lines - Down**
- **Cable Lines - Down**
- **Communication Towers - Down ?**  
**(Surviving 185 mph winds?)**

# CT DEMHS STATEWIDE EXERCISE & ARES S.E.T. 2012

## ***RESULT***

- **Roads become impassable**
  - **Travel becomes “difficult”**
  - **No Electricity (w/o Generators)**
  - **No Heat**
  - **No Water (home wells)**
  - **Major Building and Boat damage**
  - **Fires**
  - **Regular Comm Systems go In-Op.**
- And... NO INTERNET! ARGH! ☹️**



# **CT DEMHS STATEWIDE EXERCISE & ARES S.E.T. 2012**

**OKAY.....**

**NOW**

**WHAT?**



**CT DEMHS STATEWIDE EXERCISE & ARES S.E.T. 2012**

## **Emergency Operation Plan “A”**

**Use Existing Repeaters  
for as long as  
they remain working**



**CT DEMHS STATEWIDE EXERCISE & ARES S.E.T. 2012**

**FIRST UP...**

**ARES-Skywarn**



CT DEMHS STATEWIDE EXERCISE & ARES S.E.T. 2012

# ***TRANSITION TIME***

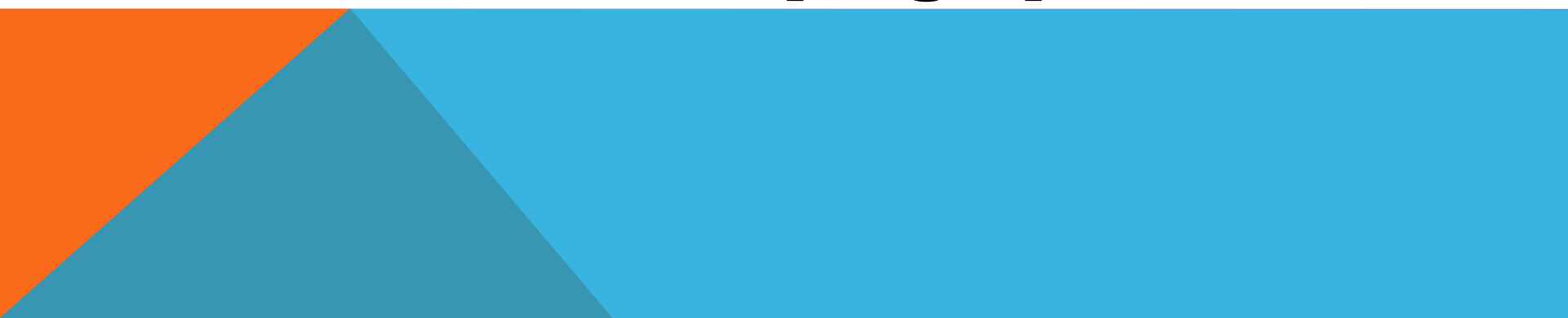
**As**

**ARES-Skywarn activity**

**slows down,**

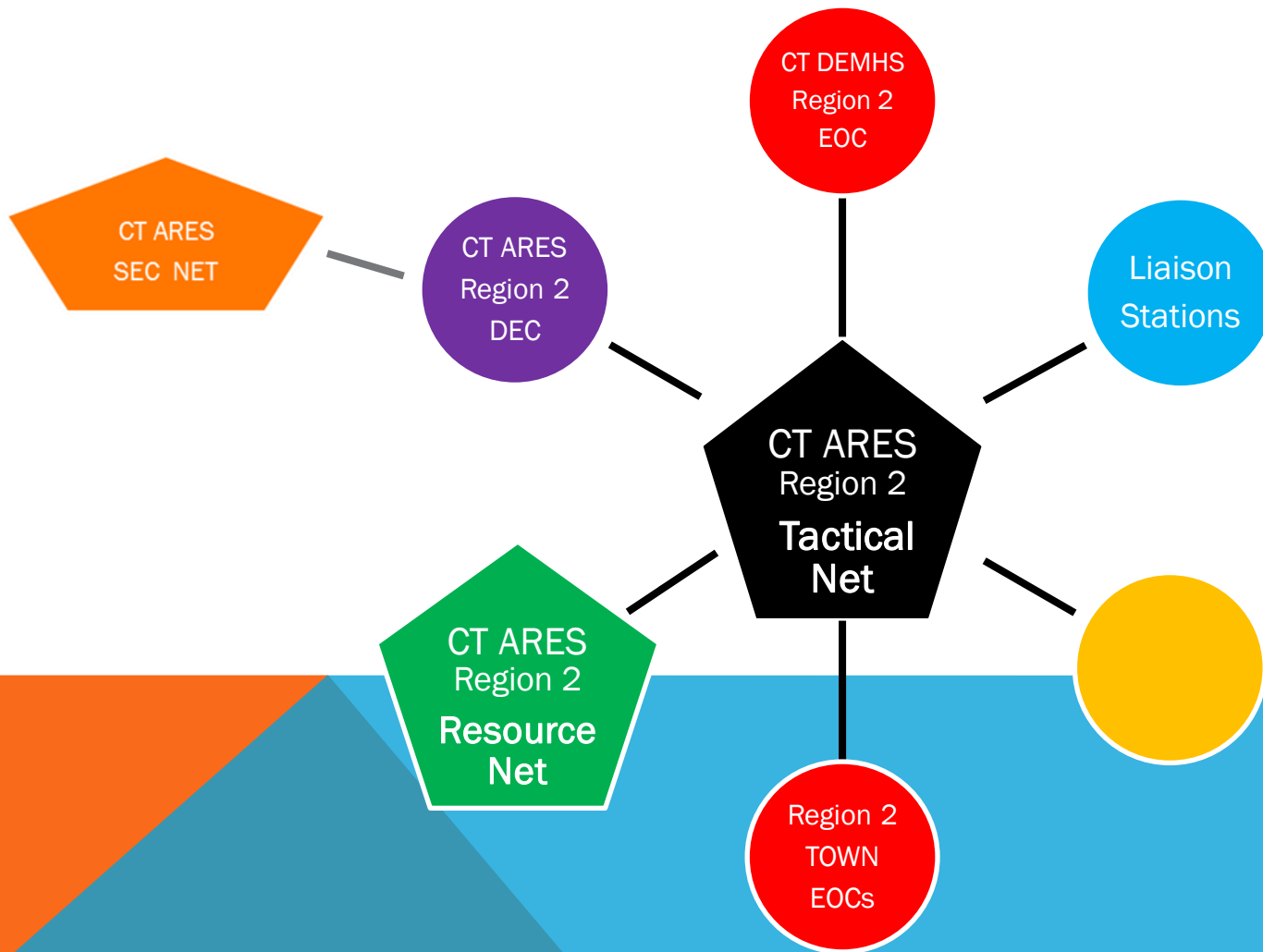
**CT ARES**

**is ramping up.**



# CT DEMHS STATEWIDE EXERCISE & ARES S.E.T. 2012

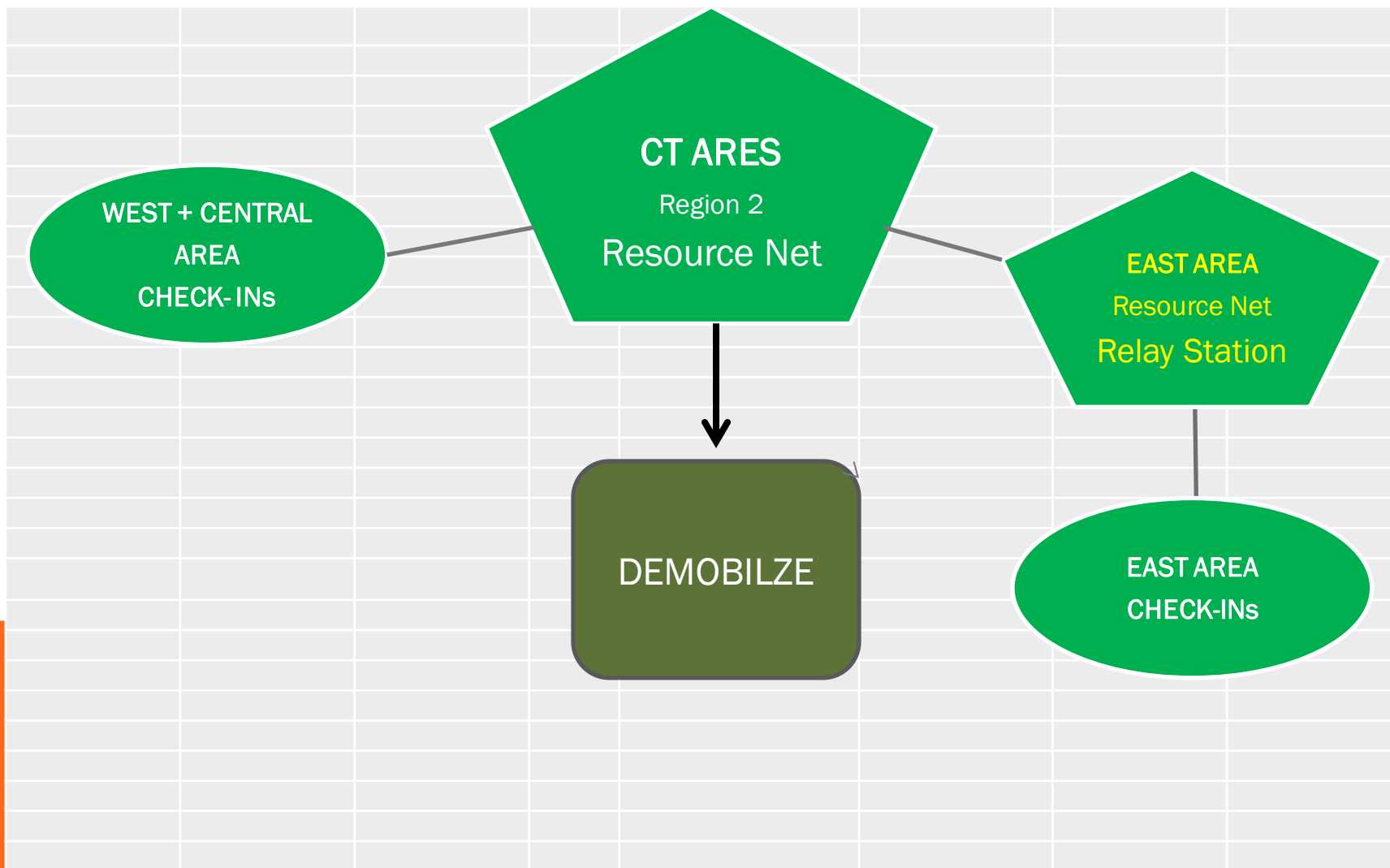
## Plan “A”





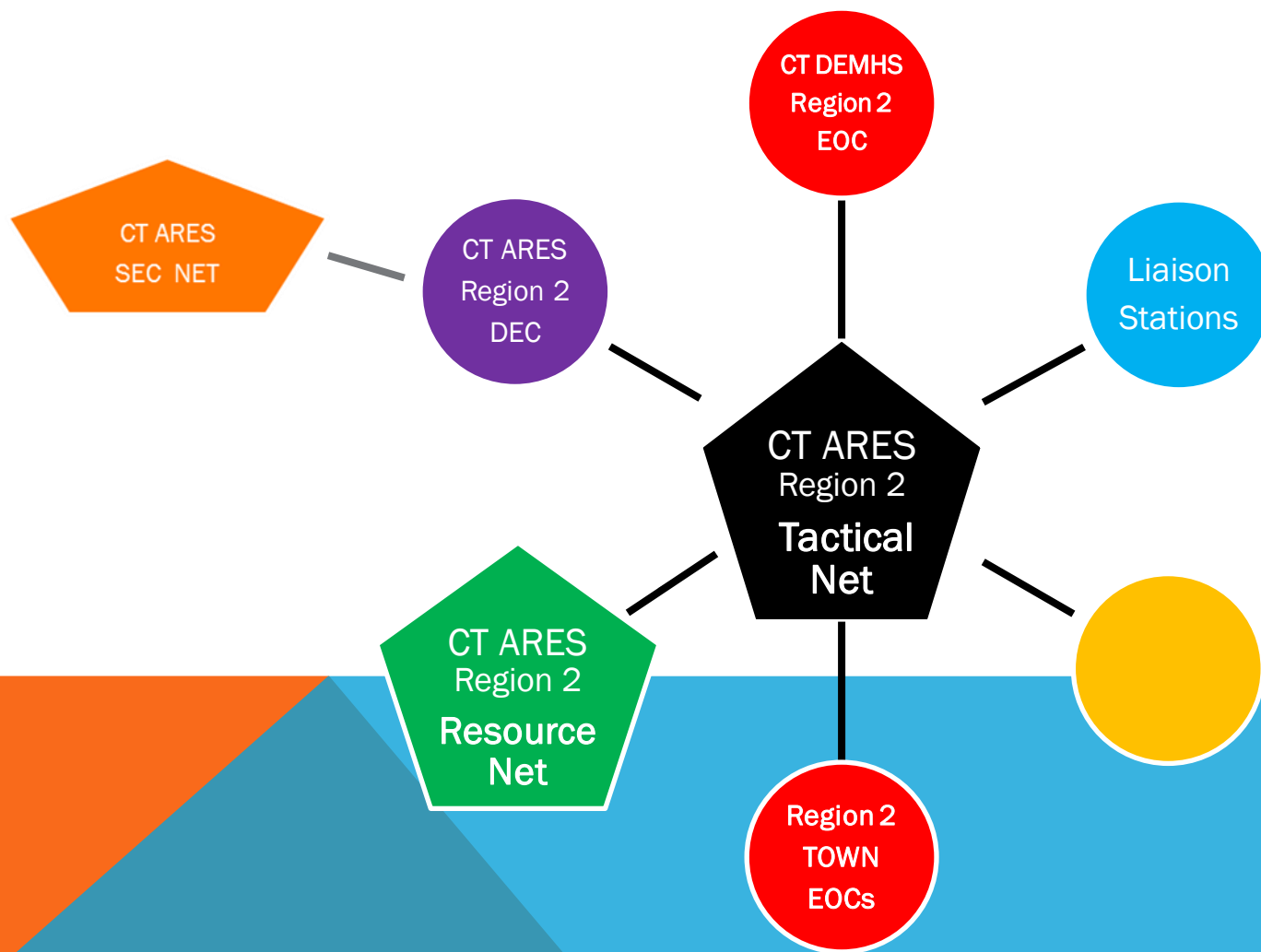
# CT DEMHS STATEWIDE EXERCISE & ARES S.E.T. 2012

## Plan A: Resource Nets



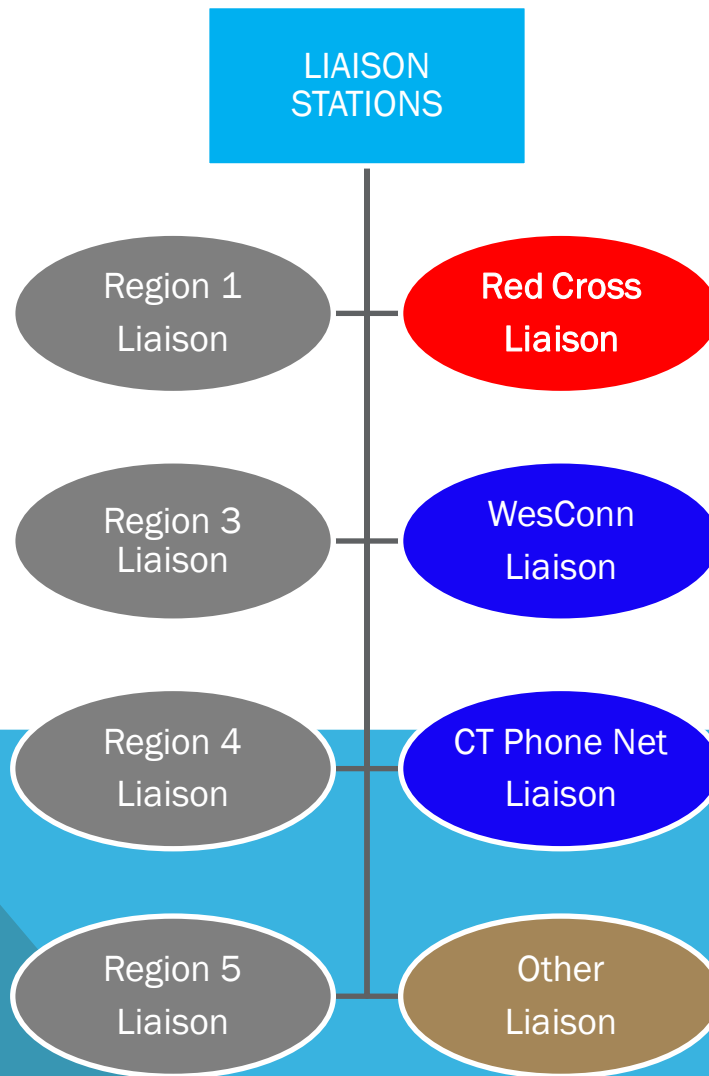
# CT DEMHS STATEWIDE EXERCISE & ARES S.E.T. 2012

## Plan “A”



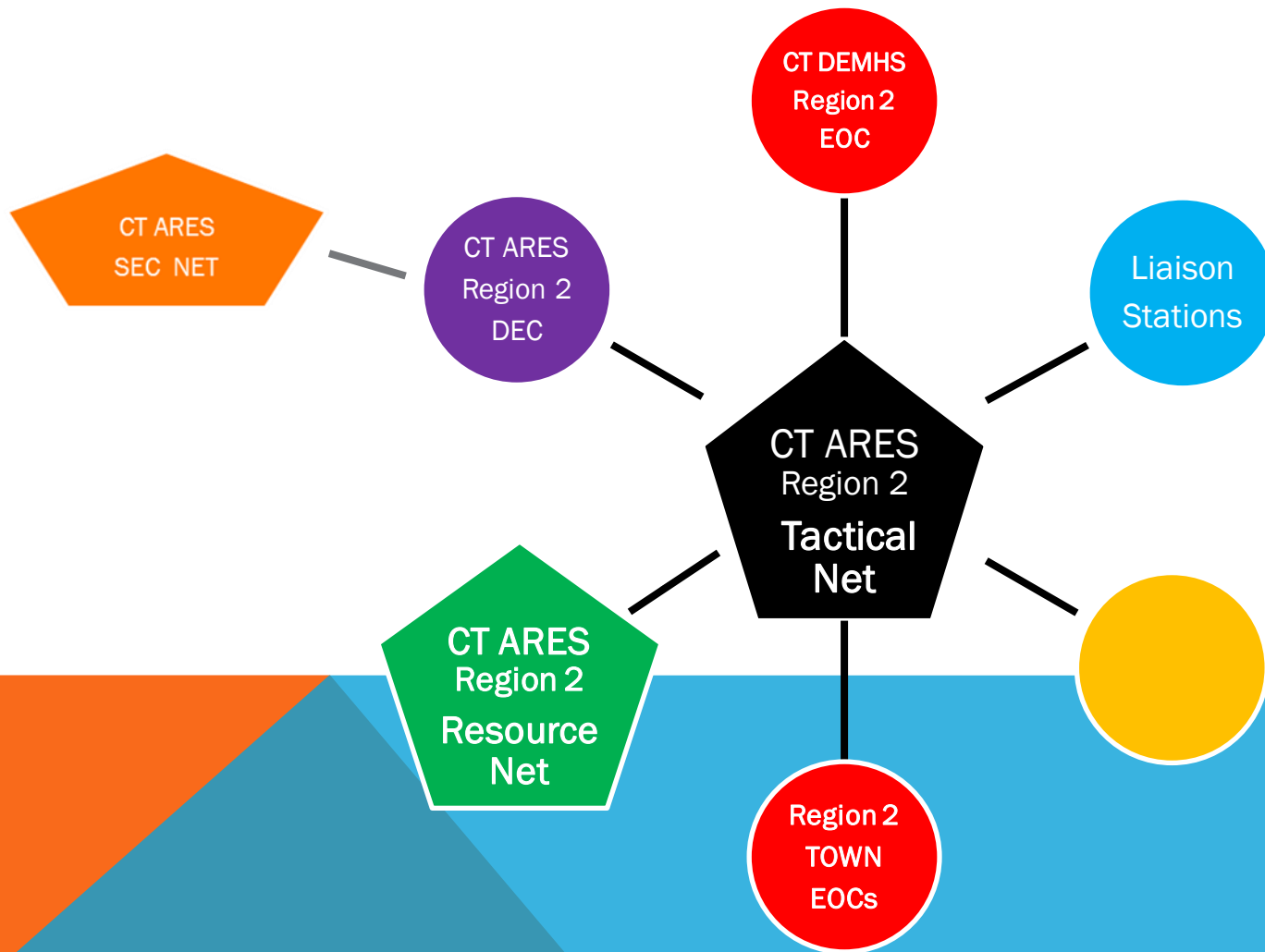
# CT DEMHS STATEWIDE EXERCISE & ARES S.E.T. 2012

## Plan “A” : Liaison Stations



# CT DEMHS STATEWIDE EXERCISE & ARES S.E.T. 2012

## Plan “A”



# CT DEMHS STATEWIDE EXERCISE & ARES S.E.T. 2012

## **PLAN “A” – Repeater Nets**

**But ...**

**ARE YOU  
PREPARED  
?**





# CT DEMHS STATEWIDE EXERCISE & ARES S.E.T. 2012

## **PLAN “A” – Repeater Nets**

- ✓ **A Portable 2m/440 Antenna (“ *GAIN*” )**
- ✓ **A Way To Elevate and Secure It**
- ✓ **Enough Coax to feed it.**
- ✓ **Coax Adapters (as needed)**
- ✓ **Repeater Net Frequencies List**
- ✓ **HEADSET**
- ✓ **Speaker Mic (optional... but very handy)**

# **CT DEMHS STATEWIDE EXERCISE & ARES S.E.T. 2012**

**AND THEN...**

**THERE WAS TROUBLE...**



**CT DEMHS STATEWIDE EXERCISE & ARES S.E.T. 2012**

**CAT 3 Storm**  
**Takes Down**  
**ALL REPEATERS**



**CT DEMHS STATEWIDE EXERCISE & ARES S.E.T. 2012**

# **Emergency Operation Plan “B”**

## **Simplex Nets**

**Zone ↔ Area ↔ Region**

# CT DEMHS STATEWIDE EXERCISE & ARES S.E.T. 2012

## PLAN "B" – Simplex Nets





# **CT DEMHS STATEWIDE EXERCISE & ARES S.E.T. 2012**

## **PLAN “B” – Simplex Nets**

### **AREA Simplex Nets**

**Use Output Freqs.**

**West – 442.500**

**Central – 147.505**

**East - .29**

# CT DEMHS STATEWIDE EXERCISE & ARES S.E.T. 2012

## **PLAN “B” – Simplex Nets**

**ARE YOU  
PREPARED  
TO GO...  
SIMPLEX  
?**

# CT DEMHS STATEWIDE EXERCISE & ARES S.E.T. 2012

## **SIMPLEX NEEDS**

- ✓ **A Portable 2m/440 Antenna (“ GAIN” )**
- ✓ **A Way To Elevate and Secure It**
- ✓ **Enough Coax to feed it**
- ✓ **Coax Adapters (as needed)**
- ✓ **Simplex Net Frequencies List**
- ✓ **HEADSET**
- ✓ **Speaker Mic (optional... but very handy)**

**CT DEMHS STATEWIDE EXERCISE & ARES S.E.T. 2012**

**QUESTIONS ?**

CT DEMHS Exercise

*Next...*

The bottom of the slide features a decorative design with three overlapping geometric shapes: a large light blue triangle on the right, a medium teal triangle on the left, and a smaller orange triangle in the bottom-left corner.

# CT DEMHS STATEWIDE EXERCISE & ARES S.E.T. 2012

## 2 Parts

❖ Pre Landfall

-----

❖ Post Landfall



**CT DEMHS STATEWIDE EXERCISE & ARES S.E.T. 2012**

**1<sup>st</sup> Day of  
Exercise**

**✓ Pre Landfall**



**CT DEMHS STATEWIDE EXERCISE & ARES S.E.T. 2012**

**ARES-Skywarn**  
is activated.

**CT ARES**  
**Alert Levels Rise**



**CT DEMHS STATEWIDE EXERCISE & ARES S.E.T. 2012**

# 2<sup>nd</sup> Day of Exercise

✓ Post Landfall

The bottom of the slide features a decorative graphic consisting of several overlapping triangles. On the left, there is a bright orange triangle. To its right is a teal triangle. The rest of the bottom section is a solid light blue background.



**CT DEMHS STATEWIDE EXERCISE & *ARES* S.E.T. 2012**

**CT ARES**

**is activated.**



**CT DEMHS STATEWIDE EXERCISE & ARES S.E.T. 2012**

# **CT ARES Mission:**

**To Light Up  
Every EOC  
in Connecticut**



# **CT DEMHS STATEWIDE EXERCISE & *ARES S.E.T.* 2012**

## **HOW?**

## **2 Ways.**



**CT DEMHS STATEWIDE EXERCISE & ARES S.E.T. 2012**

# Option 1 (Preferred)

Operate from inside  
the EOC.



# CT DEMHS STATEWIDE EXERCISE & ARES S.E.T. 2012

## Option 2 (next best)

Operate from the  
EOC Parking Lot

*(or, across the street)*

The bottom of the slide features a decorative design with three overlapping geometric shapes: a solid orange triangle on the left, a teal triangle in the center, and a solid light blue triangle on the right.

# **CT DEMHS STATEWIDE EXERCISE & ARES S.E.T. 2012**

## **Method: Step 1**

Monitor the “Tactical Net”

Check-In the “Resource Net”



# CT DEMHS STATEWIDE EXERCISE & ARES S.E.T. 2012

## Method: Step 2

**LISTEN** – Monitor Net Frequencies.

“A Quiet Net is a Peaceful Net”

## Use Good Judgement.

Transmit only when you have:

- Official traffic to pass
- A request to make
- A response to Net Control.

# CT DEMHS STATEWIDE EXERCISE & ARES S.E.T. 2012

## Method: Step 3

### RECORD KEEPING

- Maintain an Event Log Book
- Keep a Message Log Book.
- Make notes on  
*THE GOOD, THE BAD and THE UGLY.*

(These will be vital for the After Action Report)






# **CT DEMHS STATEWIDE EXERCISE & *ARES S.E.T.* 2012**

## **Method: Step 4**

### **BE SELF-SUFFICIENT**

- ✓ Bring an extra Battery for your portable radio.
  - ✓ Pack Food and Beverages (non-alcoholic) for the day.
  - ✓ Bring any Medications you would need for a 24 hr shift.
  - ✓ Bring Paper/ Notebooks/ Log Books/ Radiograms/ pencils/ pens, etc,
- 

**CT DEMHS STATEWIDE EXERCISE & *ARES S.E.T.* 2012**

QUESTIONS ?



# **CT DEMHS STATEWIDE EXERCISE & *ARES S.E.T.* 2012**

Thank you.  
See you in July.

